



## Switch Contact SG-15

Reed contact



- The switch contact is intended for use with mechanical flow meters and serves to electrically monitor flow limits.



## Switch Contact SG-15

### Reed contact

#### Operating principle

Reed contact

#### Application

The switch contact is for use on mechanical flow meters for the electronic monitoring of flow limits

#### Features

- Normally open or Change over
- Bi-stable switching behavior within the specified measuring range
- Sealed housing IP 65 or IP67 (depending on connection)

#### Connection options

- Connector in compliance with EN 175301-803, Form C
- Connector M12x1
- Cable

#### Notice

- Refer also to the Data Sheets and Operating Instructions of the respective flow sensor!
- Download: [www.schmidt-messtechnik.de](http://www.schmidt-messtechnik.de)

#### Operating data

##### Operating temperature standard

EN 175301-803	-20 °C – 120 °C
Cable	-20 °C – 120 °C
M12x1	-20 °C – 85 °C

##### High temperature version

EN 175301-803	-20 °C – 160 °C
Cable	-20 °C – 160 °C

For switch contacts in explosion-proof design according to ATEX directive, changed operating data apply. Refer to data sheet for SG-15 EX!

#### Combination options

Media	Device	
H <sub>2</sub> O	RVM/U-2	RVM/U-4
	RVM/UA-2	RVM/U-S4
	RMU-A	
	RMU-B	
	RVO/U-2	RVO/U-4
		WY
Oil	DKG-2	
	DKM-2	
	DKM/A-2	
Air	RVM/U-L2	RVM/U-L4
	RVO/U-L2	RVO/U-L4



## Switch Contact SG-15

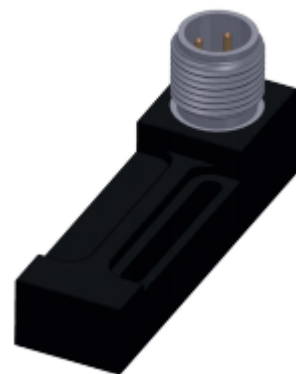
Reed contact

### Connection options

Connector in compliance with EN 175301-803



Connector M12x1



Cable



D-EN-SG15-20200512



## Switch Contact SG-15

### Reed contact

Electrical data	
<b>Version for:</b> RVM/U-2, RVM/UA-2 RMU-A, RMU-B, RVO/U-2, DKG-2, DKM-2, DKM/A-2, RVM/U-L2 und RVO/U-L2	
Change over (COC) (1) Normally open (NOC)	250V · 1,5A · 50VA (2) 230V · 3A · 60VA
Change over M12x1 (-20 °C – 85 °C) Normally open M12x1 (-20 °C – 85 °C)	125V · 1,5A · 50VA (2) 125V · 3A · 60VA
Change over PLC (COC) (1)	250V · 1A · 60V
<b>Version for:</b> RVM/U-4, RVM/U-S4, RVO/U-4, WY, RVM/U-L4, und RVO/U-L4	
Change over (COC) (1) Normally open (NOC)	150V AC/DC · 1A · 20VA 140V AC · 0,7A · 20VA 200V DC · 1A · 20VA
Change over M12x1 (-20 °C – 85 °C) Normally open M12x1 (-20 °C – 85 °C)	125V AC/DC · 1A · 20VA 125V AC · 0,7A · 20VA 125V DC · 1A · 20VA
1) Possible with connector only 2) Minimum load 3VA	

#### Electrical connection

- Connector in compliance with EN 175301-803, Form C (DIN 43650, Form C)
- Connector M12x1
- Cable (1 m) (3)

#### Ingress protection

IP65: Connector in compliance with EN 175301-803, Form C or Connector M12x1  
IP67: Cable

#### Output signal

The contact opens / changes when the flow decreases below the set point.

#### Power supply

Not required (potential-free reed contacts)

(3) Available only as Normally Open Contact (NOC)



## Switch Contact SG-15

### Reed contact

#### Connection diagram

Connector in compliance with EN 175301-803 and cable

M12x1

Change over (COC)



Change over (COC)



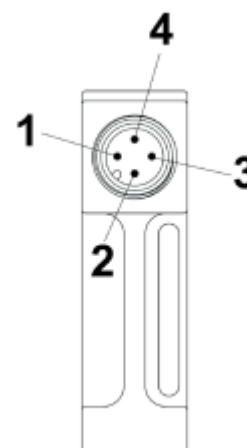
Normally open (NOC)



Normally open (NOC)



Pin-assignment



#### Important instructions!

Technical changes and errors reserved.

Pictures can be similar.

The operating instructions belonging to this device must be observed! Download at [www.schmidt-messtechnik.com](http://www.schmidt-messtechnik.com).