



Flow Monitor RVM/U-4

Flow monitor operating on the principle of the float type monitor for liquids



- Universal orientation
- High reliability
- High switch accuracy
- Infinitely variable switchpoint adjustment
- High pressure resistance
- Threaded connection, special threads on request

D-EN-RVMU4-20200526



Flow Monitor RVM/U-4

Flow monitor operating on the principle of the float type monitor for liquids

Features

- Universal orientation
- High reliability
- High switch accuracy
- Infinitely variable switchpoint adjustment
- High pressure resistance
- Threaded connection, special threads on request

Application

- Mechanical engineering
- Medicine technology
- Pharma industry
- Chemical industry
- Research and development
- Cooling systems and cooling circuits

Operating data

Operating pressure max.	300 bar (brass) 350 bar (stainless steel)
Pressure drop	0,02 – 0,2 bar
Maximum temperature	100°C (optional 160°C)
Accuracy	±10 % of full scale

Measuring ranges

Type	Switch point for H ₂ O at 20°C (1)		
	[l/min]	[gph]	[gpm]
RVM/U-4/01	0,005 – 0,06	0,08 – 0,95	
RVM/U-4/02	0,04 – 0,13	0,65 – 2,05	
RVM/U-4/06	0,1 – 0,6	1,6 – 9,5	
RVM/U-4/1	0,2 – 1,2	3,0 – 19,0	
RVM/U-4/2	0,4 - 2	6,5 – 31,5	
RVM/U-4/3	0,5 - 3	8,0 – 48,0	
RVM/U-4/5	1 - 5	16,0 – 80,0	

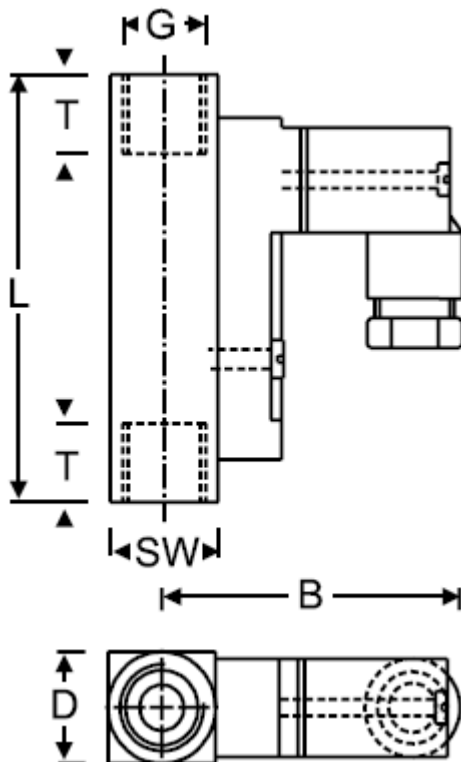
(1) The specified data are switch-off points, other switch ranges on request



Flow Monitor RVM/U-4

Flow monitor operating on the principle of the float type monitor for liquids

Mechanical drawing



Summary of types

Type	Overall dimensions [mm]							Weight approx. [g]
	SW	D	B	G	DN	T	L	
RVM/U-4/01	17	17	47	1/4"	8	10	65	140
RVM/U-4/02								
RVM/U-4/06								
RVM/U-4/1								
RVM/U-4/2								
RVM/U-4/3								
RVM/U-4/5								

D-EN-RVMU4-20200526



Flow Monitor RVM/U-4

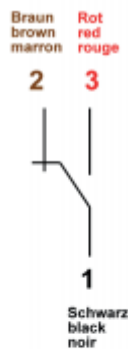
Flow monitor operating on the principle of the float type monitor for liquids

Connection diagram

Connector in compliance with EN 175301-803 and cable

M12x1

Change over (COC)



Change over (COC)



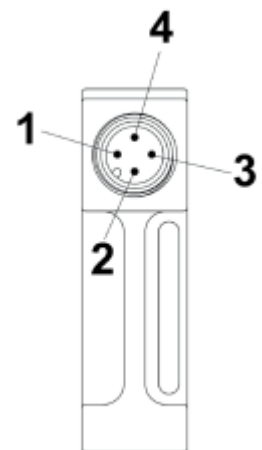
Normally open (NOC)



Normally open (NOC)



Pin-assignment





Flow Monitor RVM/U-4

Flow monitor operating on the principle of the float type monitor for liquids

Electrical data	
Change over (2)	200 V • 1 A • 20 VA
Normally open	200 V • 1 A • 20 VA
Change over M 12x1 (-20 °C – 85 °C)	125 V • 1 A • 20 VA
Normally open M 12x1 (-20 °C – 85 °C)	125 V • 1 A • 20 VA
Ingress protection: IP 65: Plug connection DIN 43650 Form C or Plug connection M 12x1 IP 67: 1 m sealed cable	
Output signal	The contact opens / changes when the flow decreases below the set point.
Power supply	Not required (potential-free reed contacts)
Plug types	Other plug types or cable lengths on request

(2) Only with plug connection

Material		
	Brass version	Stainless steel version
Spring:	1.4571	1.4571
Magnets:	Hard ferrite	Hard ferrite
Housing:	Brass nickel-plated	1.4571
All other wetted parts::	Brass	1.4571

Important instructions!

Technical changes and errors reserved.

Pictures can be similar.

The operating instructions belonging to this device must be observed! Download at www.schmidt-messtechnik.com.