



Sight glass fitting made of stainless steel

Design 127



D-EN-Sight-glass-fitting-127-20220622

- High tolerable temperatures
- High operating pressure possible
- Special versions available



Sight glass fitting made of stainless steel Design 127

Application:

Screw sight glass fittings are used to monitor processes inside boilers, containers and pipelines. They are used in the food sector, dairies, breweries, beverage industry in pharmaceutical and medical technology. Sterilization is possible due to the high permissible temperatures.

Operating conditions:

Operating pressure: max. 6 bar
 Vacuum: max. 1 Torr
 Temperature: max. 220° C

Options:

Higher operating pressure
 Light fittings
 Wiper, Design 190

Materials	
Butt weld pipe end	WN 1.4404 or 1.4301
Slotted cover nut	WN 1.4301
Glass	Borosilicate glass DIN 7080 Soda lime glass DIN 8902
Intermediate layer	Aramid fibre / PTFE
Gasket	Silicone / Viton / EPDM / PTFE

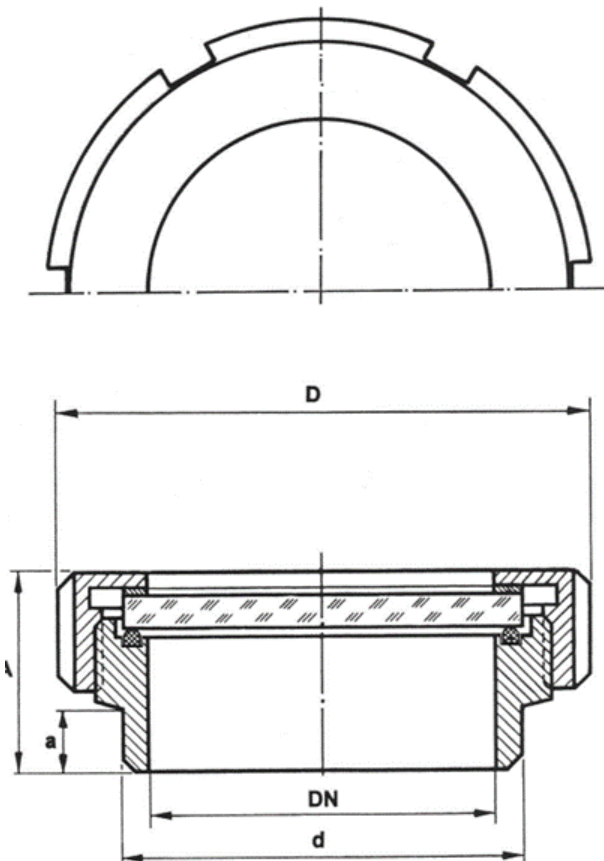
Ordering example:

Sight glass fitting, design127
 WN 1.4301; Borosilicate glass;
 Gasket silicone
 DN 50



Sight glass fitting made of stainless steel

Design 127



Dimensions:				
DN	a	A	d	D
50	18	46	55	92
65	22	49	72	112
80	23	54	87	127
100	32	65	106	148
125	20	60	132	178

D-EN-Sight-glass-fitting-127-20220622

Important instructions!

Technical changes and errors reserved.

Pictures can be similar.

The operating instructions belonging to this device must be observed! Download at www.schmidt-messtechnik.com.