



Sight Flow Indicator Type 881-K

Flap indicator for liquids



D-EN_881K_20190604

- P_{\max} 40 bar
- T_{\max} 260°C
- Sight glass lights possible



Sight Flow Indicator Type 881-K

Flap indicator for liquids

Operating conditions

Working pressure: max. 16 / 25 / 40 bar
Working temperature: max. 150°C or 280°C

Application

The flow indicators are used for optical control of fluids and gases, for horizontal and vertical pipelines.

Installation

Horizontal and by vertical flow direction from bottom to top

Options

with - Sight glass light - fittings

Certificate: (Option)

Acc. to EN 10204-2.2 or 3.1

Ordering example

Sight Flow Indicators with flap
Design 881-K
Flap 1.4571
WN 1.4408, Borosilicate glass DIN 7080-16 bar
G 3/4"

Material			
Body	Cast iron GG 25	Cast steel GS-C 25	Stainless steel 1.4408
Covers	GG 25	GS-C 25	1.4404
Sight glass	Borosilicate glass DIN 7080 max. temp. 280 °C Soda lime glass DIN 8902 max. temp. 150 °C		
Screws	4.6 / 5.6 gal.		A4-70
Gaskets	Graphite (or other materials)		
Flap	1.4571		

Direction of flow

horizontally or from below

Important instructions!

Technical changes and errors reserved.

Pictures can be similar.

The operating instructions belonging to this device must be observed! Download at www.schmidt-messtechnik.com.

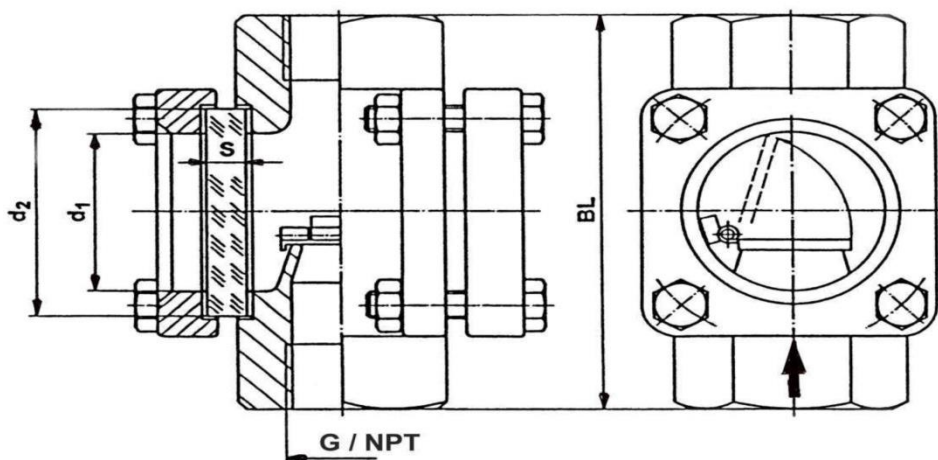


Sight Flow Indicator Type 881-K

Flap indicator for liquids

Dimensions						
BSP (G) or NPT	BL	d ₁	Glass plate			
			d ₂	S		
				PN 16	PN 25	PN 40
1/4" 3/8" 1/2"	100	32	45	10	10	10
3/4" 1"	120	48	63	10	12	15
1 1/4" 1 1/2"	160	65	80	12	15	20
2"	230 GG 180	80	100	15	20	25

NPT-thread **only** in GS-C 25 or 1.4408



D-EN_881K_20190604